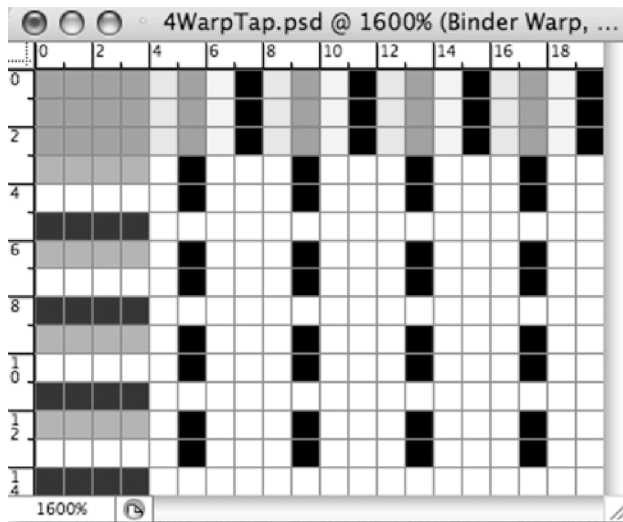
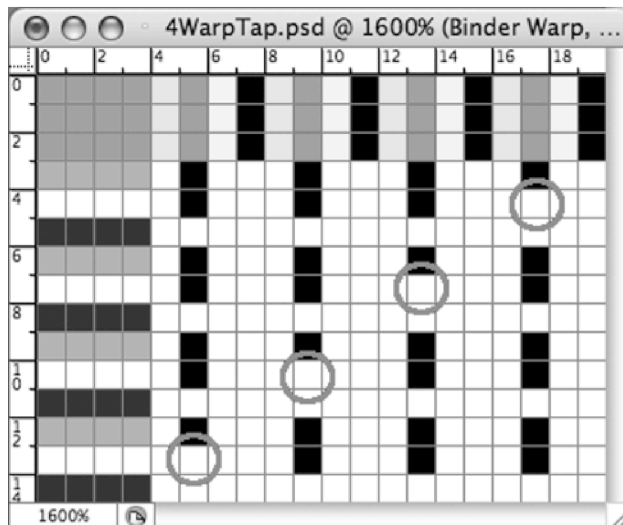


13-3



13-4



13-5

We want the magenta warp to be the binder warp. The binder warp is raised over the back figuring weft and the binder weft, but it lies under the top figuring weft. In the Layers palette highlight the *Binder warp* layer, unclick the eye icon on the *Top Warp* layer to make it invisible, click on the eye icon in the *Binder warp* layer to make it visible, so that it is the active layer. Draw in the risers on the magenta warps over the white and gray picks (13-4).

Remember we said that the binder warp also stitches the two layers of the cloth together? We need to go back and remove one stitching point in each group of four threads. The binder warp stitches under the back figuring weft, so remove the riser on the first magenta warp where it intersects the first white weft, then remove the riser on the second magenta warp where it intersects the second white weft, then remove the riser on the third magenta warp where it intersects the third white weft, and finally, remove the riser on the fourth magenta warp where it intersects the fourth white weft. We have circled the sinkers in Figure 13-5.

You probably used the white background color with your Pencil to remove those risers, but we want to eliminate them. In the Layers palette, remove the eyes to the left of all the layers except your *Binder Warp* layer. You should see a transparent ground, your black stitching points, and the four white squares where you removed the black. Select the Magic Eraser tool, making sure the Option Bar has a tolerance of 0, and that neither anti-aliased nor contiguous is checked. Click on one of the white squares and all of them will disappear. Turn the Background layer back on.

Now we need to paint in the back warp. This warp will look like a warp-faced twill viewed from the back of the cloth, but when we make our structures, we are looking down from the front of the cloth, so we need to paint in a weft-faced twill. Actually, this is easier for us because it is fewer risers to paint in. The back warp here is the yellow warp. It will be raised over the white figuring weft. We only need to paint in four risers, once in each warp color repeat. Be sure to highlight the